

# Economics Tuesday Talks

## @CaFoscari #COVID19

Ogni martedì, un appuntamento online per ascoltare, capire ed essere consapevoli dei fenomeni che ci circondano e che impattano sulla nostra vita, sul nostro lavoro, sulle nostre abitudini, sui nostri ritmi.

L'economia c'è sempre, dove ci sono delle scelte. E la scelta giusta, lo sappiamo, può fare la differenza.







# COVID-19: dati per capire diffusione e scenari

**Martedì 12 maggio 2020, ore 16:30**

prof. **Enrico Bertuzzo** Docente di Idrologia

*La diffusione in Italia e gli scenari per la fase 2*

# Spread and dynamics of the COVID-19 epidemic in Italy: Effects of emergency containment measures

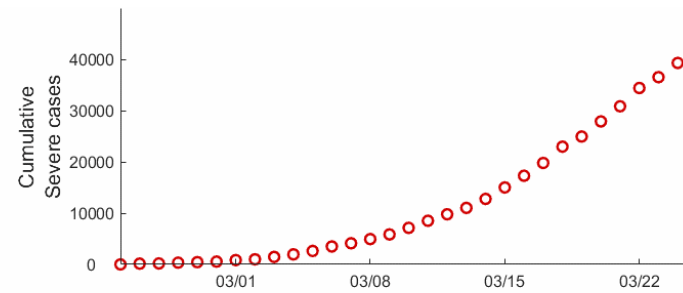
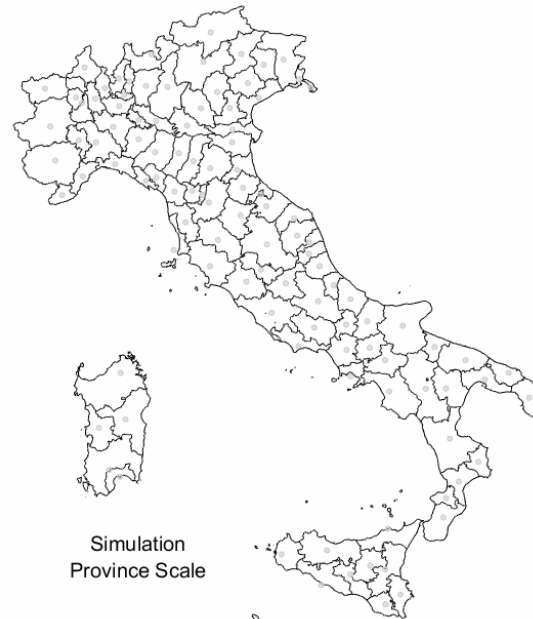
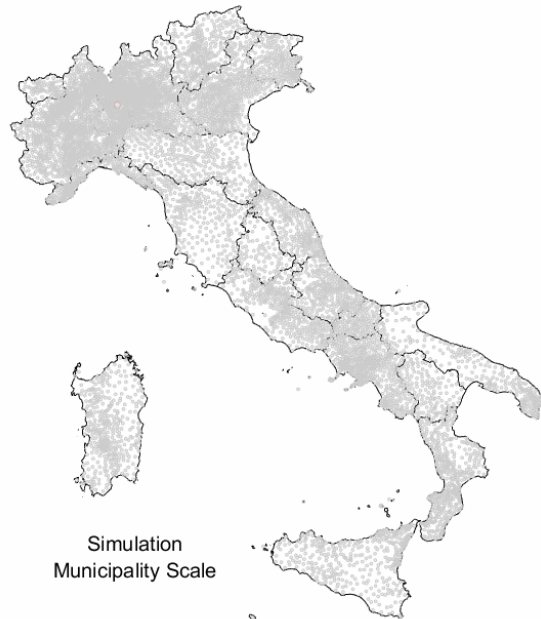
Marino Gatto<sup>a,1</sup> , Enrico Bertuzzo<sup>b,c</sup> , Lorenzo Mari<sup>a</sup> , Stefano Miccoli<sup>d</sup> , Luca Carraro<sup>e,f</sup> , Renato Casagrandi<sup>a</sup> , and Andrea Rinaldo<sup>g,h,1</sup>

## Spread of the COVID-19 in Italy

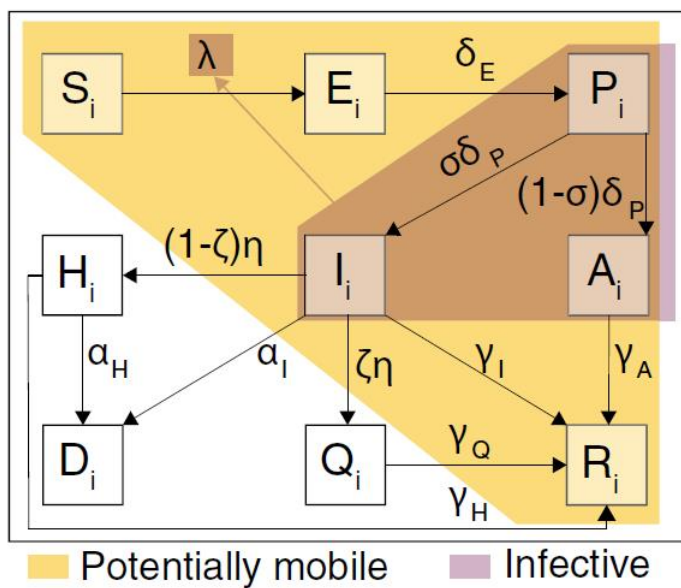
Gatto<sup>1</sup>, Bertuzzo<sup>2</sup>, Mari<sup>1</sup>, Miccoli<sup>1</sup>, Carraro<sup>3</sup>, Casagrandi<sup>1</sup>, Rinaldo<sup>4,5</sup>, PNAS 2020

1) Politecnico di Milano, 2) Università Ca' Foscari Venezia

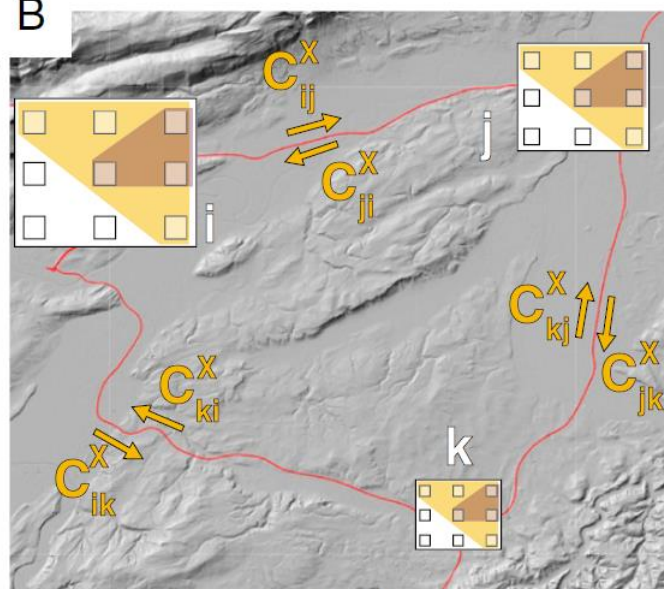
3) EAWAG, 4) EPFL 5) Università di Padova



A

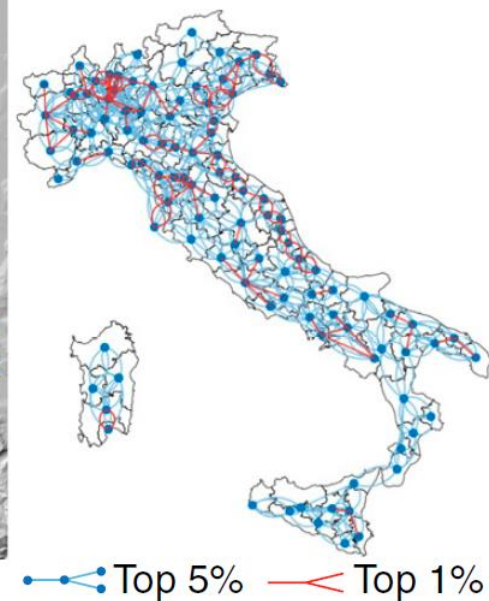


B



— Transportation network

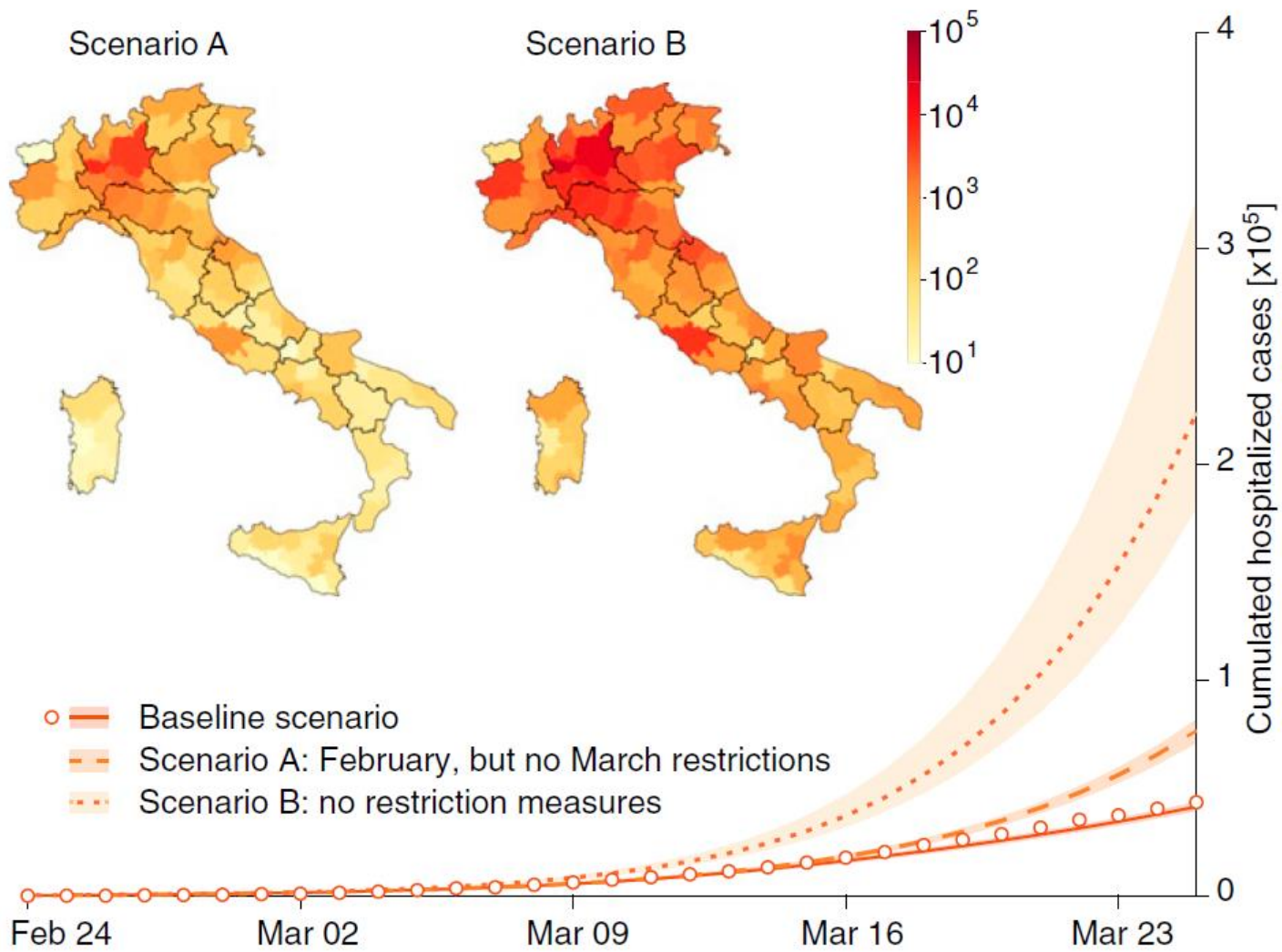
C



● Top 5% &lt; Top 1%





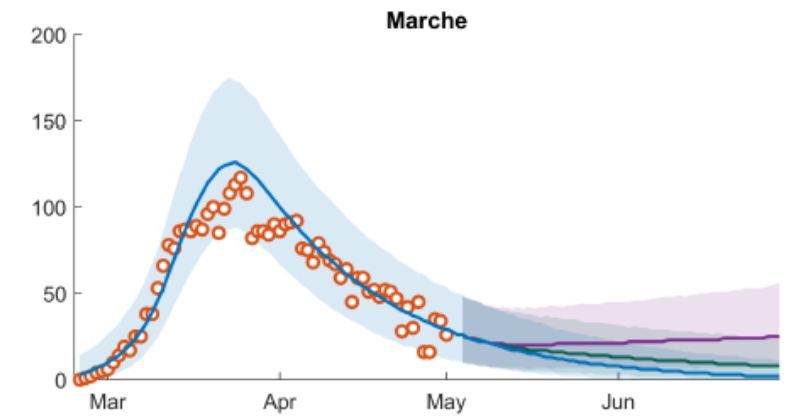
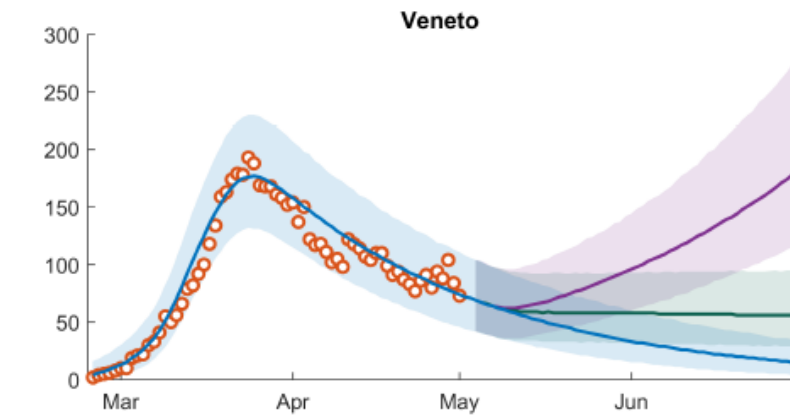
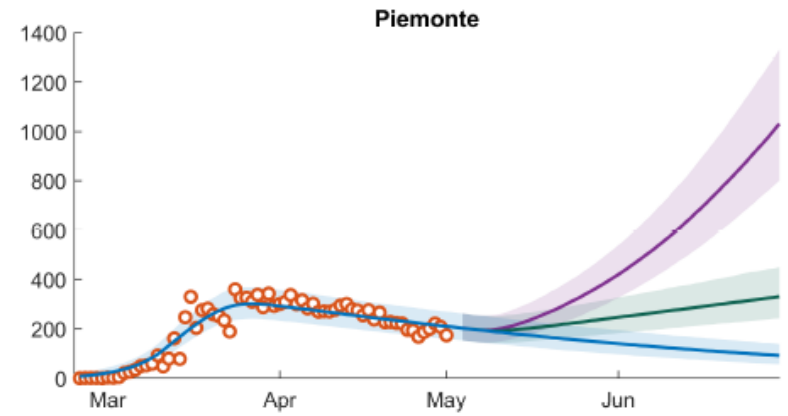
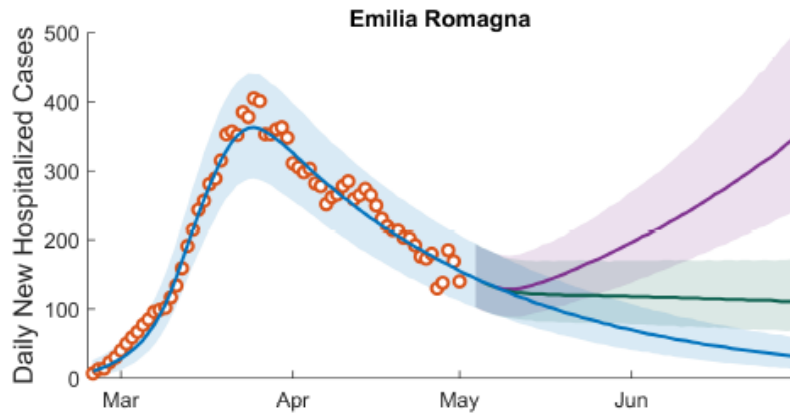
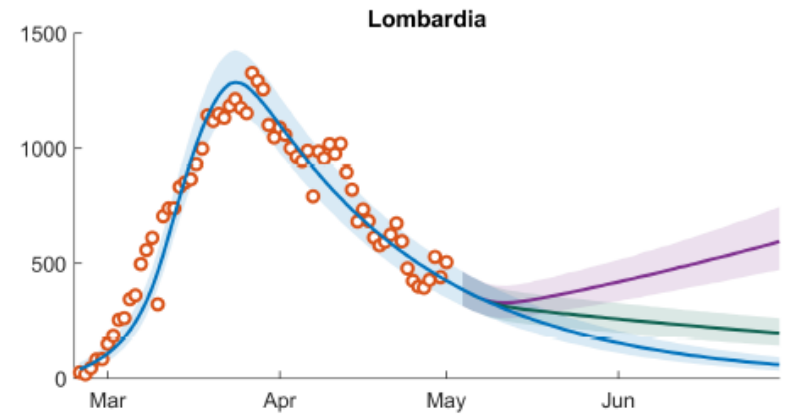
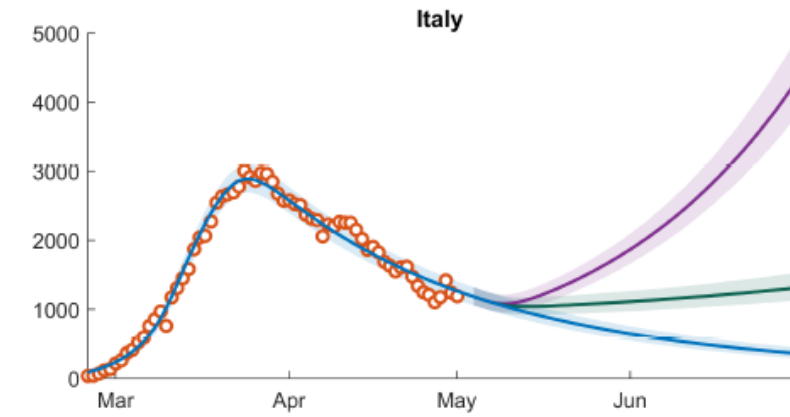


Lockdown: Evitate 200'000 ospedalizzazioni fino al 25 Marzo

Lockdown

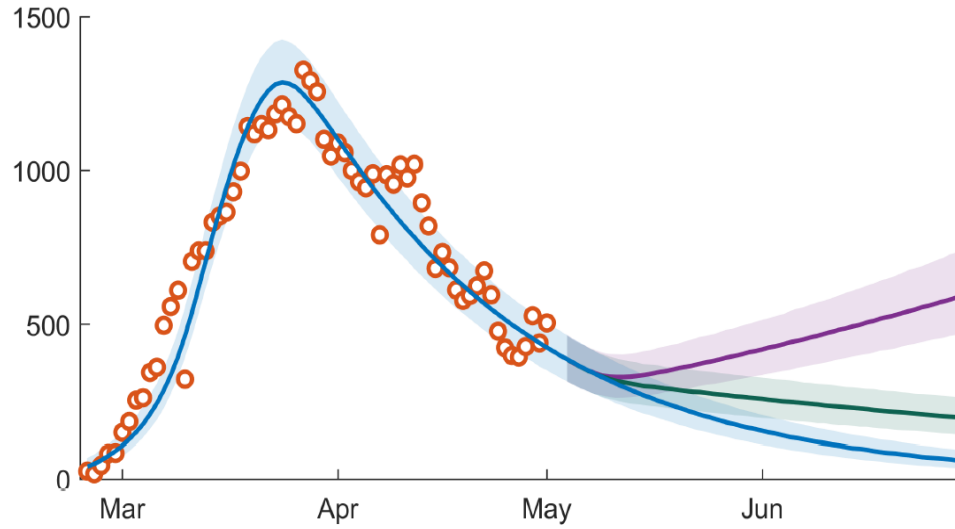
+20% Transmission

+40% Transmission

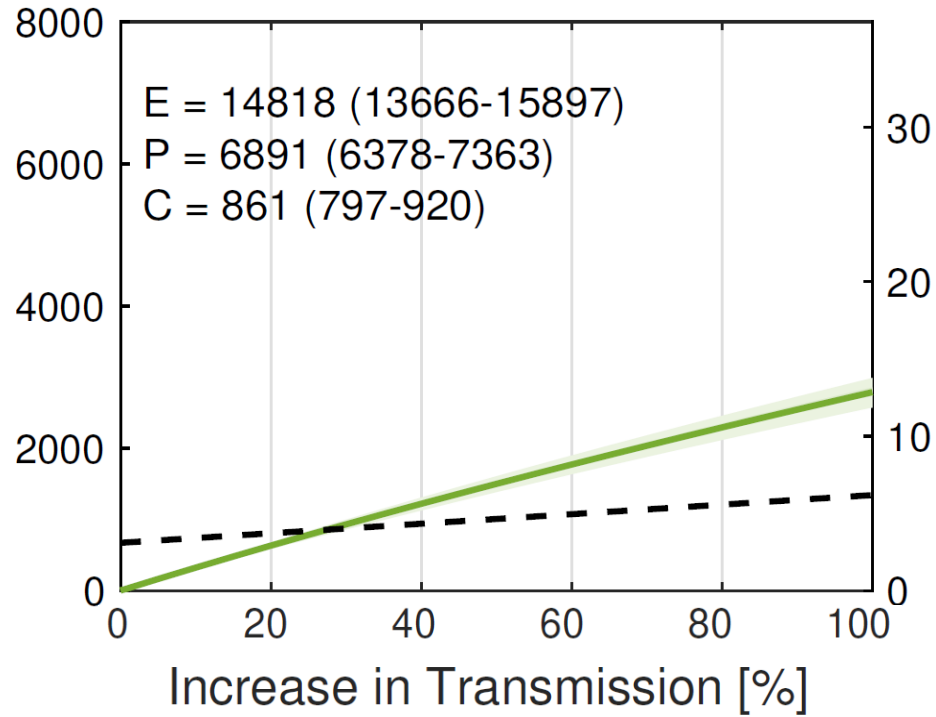


# Lombardia

Daily new Hospitalizations



Daily Number of Individuals to be isolated



Link a PNAS paper e preprint:

<https://www.pnas.org/content/early/2020/04/22/2004978117.short?rss=1>

<https://www.medrxiv.org/content/10.1101/2020.04.30.20083568v1>