



Ca' Foscari
University
of Venice

Department
of Economics



International
Master in
Economics and
Finance

23rd Edition

September 2019 - December 2020

FACULTY

External Faculty Members

Yacine Ait-Sahalia - Bendheim Center for Finance,
Princeton University

Stefano Bragoli - European Investment Fund

Giorgio Calzolari - Università di Firenze

Massimiliano Caporin - Università di Padova and GRETA

Michel Dacorogna - DEAR-Consulting University of Geneva

Andrea Giacomelli - Knowshape and GRETA

Pierluigi Gilibert - European Investment Fund

Jean Michel Grandmont - CNRS and CREST-INSEE

Alain Monfort - Maastricht University,
Banque de France, and CREST

Maurizio Murgia - Free University of Bozen

Marcello Pericoli - Banca d'Italia

Alberto Plazzi - Università della Svizzera Italiana

Stephen Schaefer - London Business School

Carlo Toffano - Prometeia

Walter Torous - MIT, Massachusetts Institute of Technology

Michele Trova - Intesa Sanpaolo

Walter Vecchiato - European Banking Authority

Università Ca' Foscari Faculty Members

Diana Barro, Monica Billio, Silvia Bozza

Roberto Casarin, Elisa Cavezzali, Marco Corazza

Michele Costola, Michael Donadelli, Martina Nardon

Loriana Pelizzon, Domenico Sartore,

Marco Tolotti, Lucia Trevisan

Director and Team

Roberto Casarin (Director),

Andrea Berardi (Vice Director)

Monica Andrighetti (Administration),

Marco Parussolo (Web and Communication)

For further information and application form

Address: Fond.ta San Giobbe, Cannaregio, 873

30121 Venice - Italy

Phone: +39 041 234 9108

E-mail: imef@unive.it

Web: www.unive.it/imef

FIRST TERM

- Quantitative Methods for Finance
- Introduction to Coding
- Econometrics
- Macroeconomics for Finance
- Microeconomics for Finance

SECOND TERM

- Term Structure
- Corporate Finance and Banking
- Investment
- Asset Pricing and Derivatives

THIRD TERM

- Economy of Risk in Insurance
- Real Estates
- Machine Learning for Finance
- Risk Management

FOURTH TERM

- Other professional courses* on credit risk, liquidity risk, regulatory aspects of financial risks, big data in finance, robo-advisoring

* Attendance reserved to selected candidates

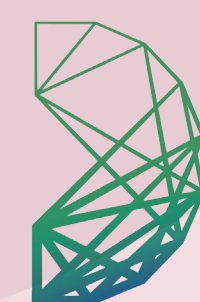
DEADLINE

The call for application will be published on IMEF website.

From March 15th on, you can pre-enrol by sending an e-mail to imef@unive.it attaching your ID and cv.

The deadline for the enrollment will be postponed in case the maximum number of students (20 units) isn't reached.

IMEF is a Professional Master's Programme (2nd level) open to a limited number of University graduates. The official language is English



prometeia