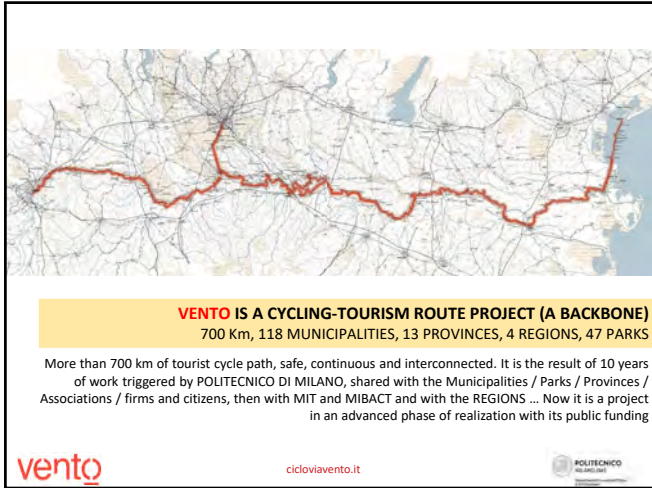




1



2



3



4



5



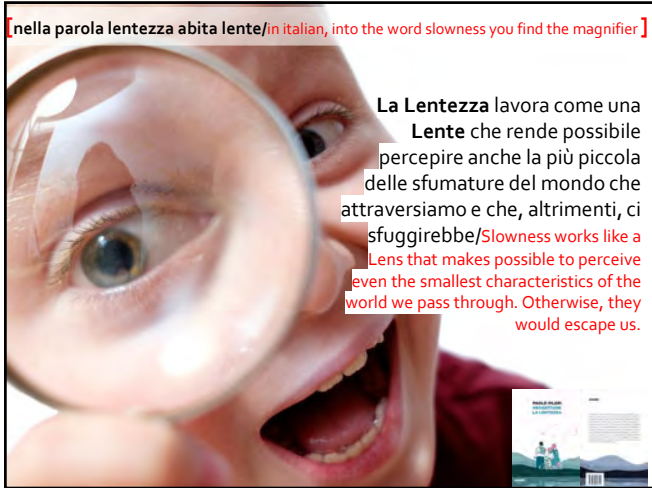
6



7



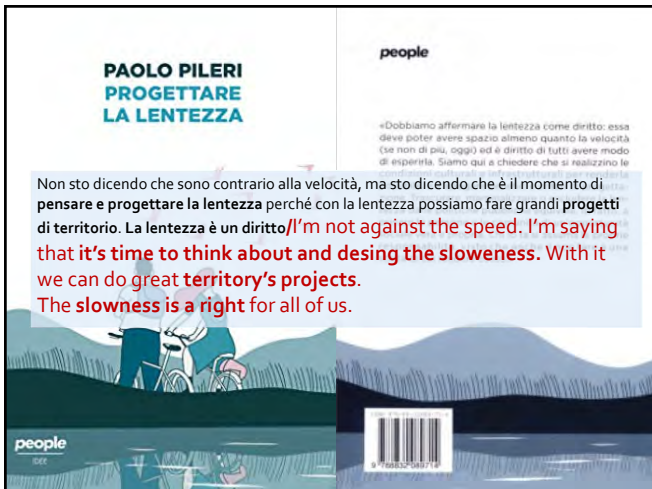
8



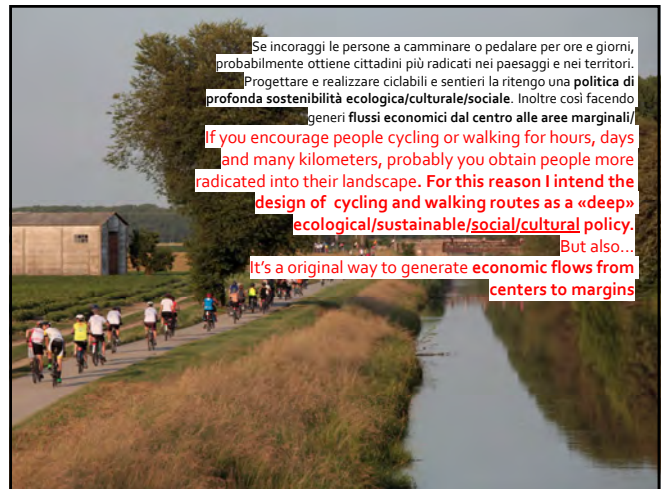
9



10



11



12



13



14



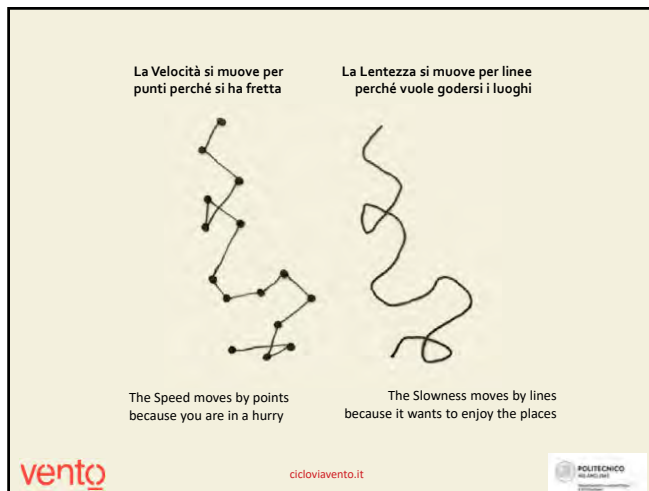
15



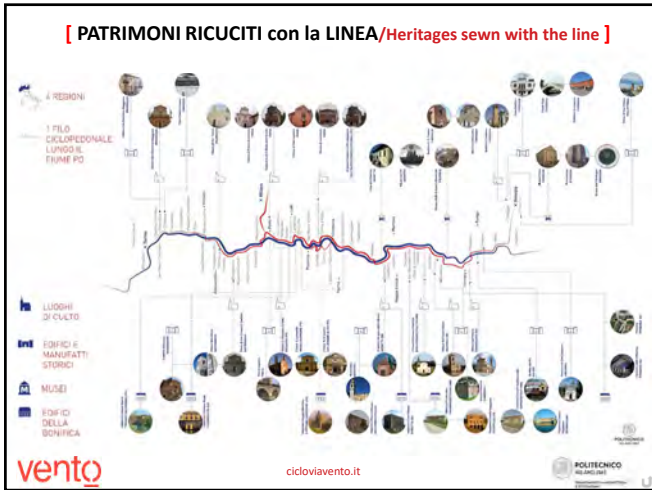
16



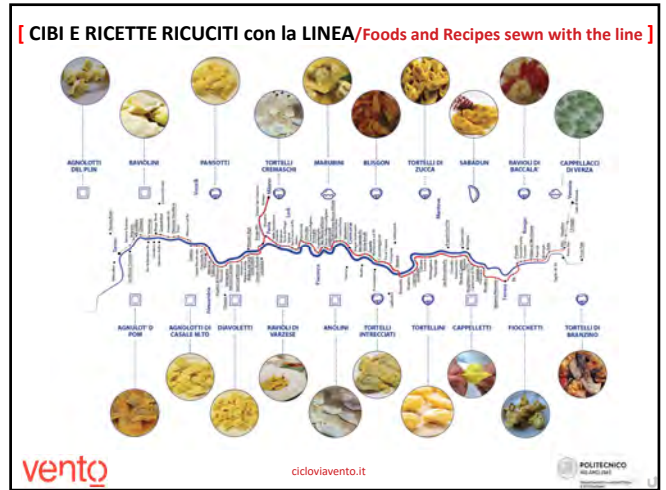
17



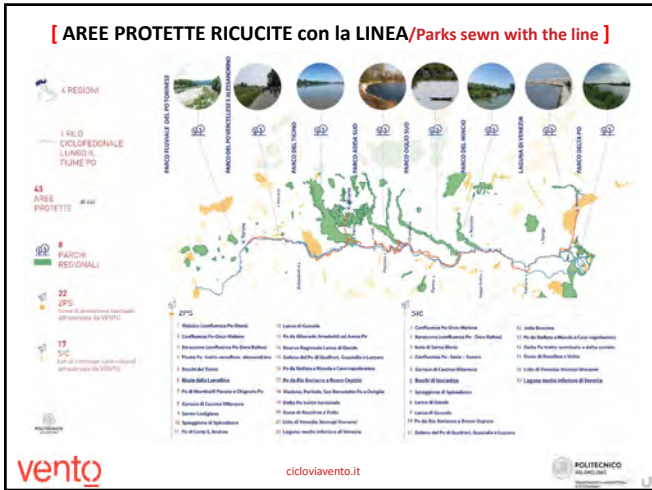
21



23



24



25



26



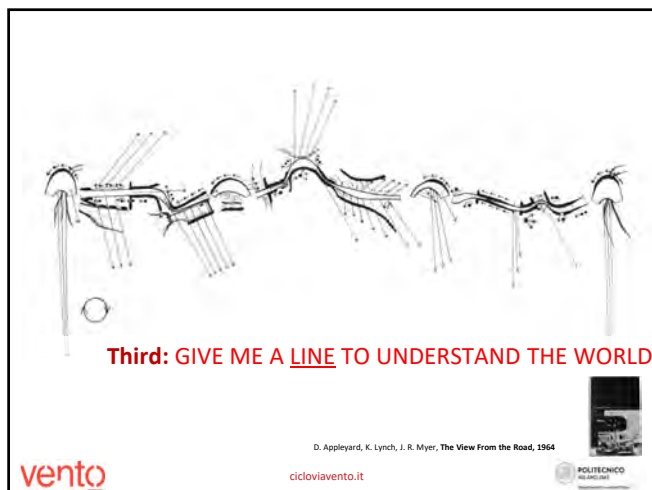
27



29



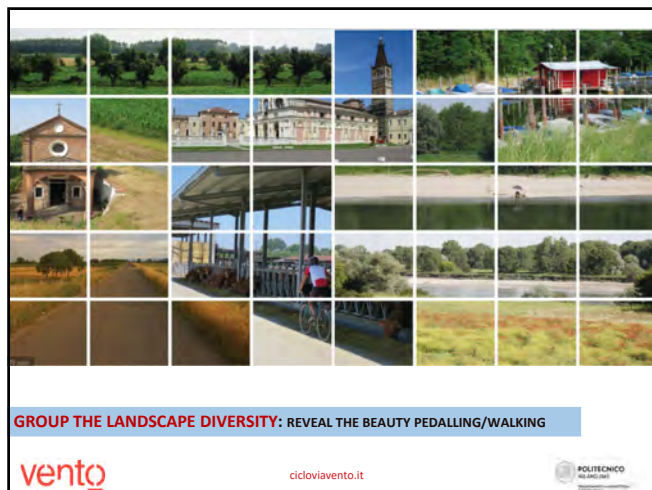
30



31



51



52



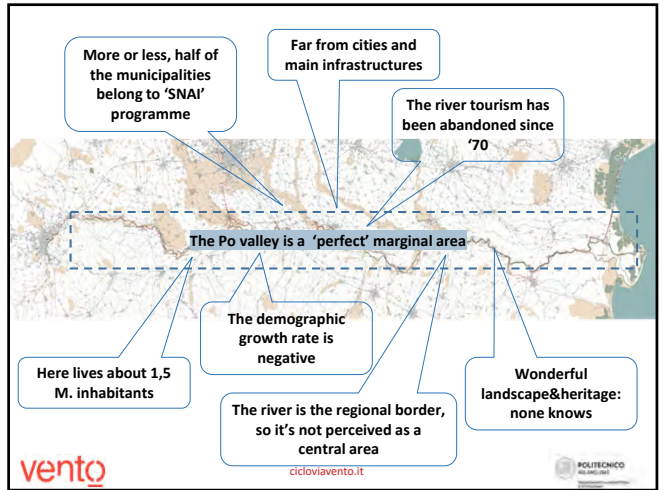
53



55



56



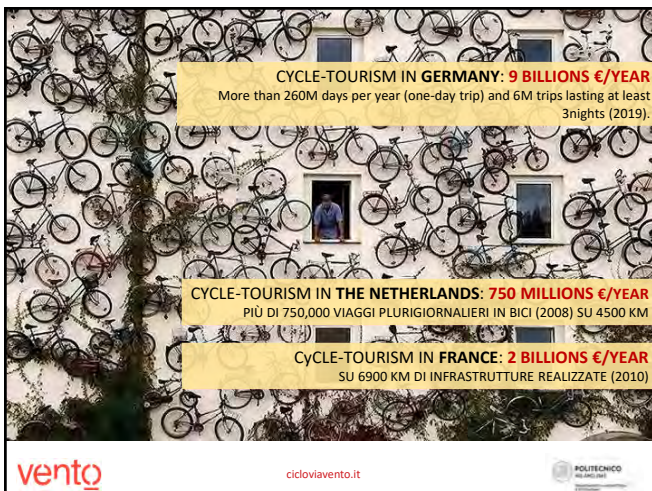
57



58



59



60



62

JOBS IN CYCLE-TOURISM IN EU27: 524.052 THAT IS 1,03/1000 INHAB (COUNTRY AVG)
 FONTE: ECF (2014), CYCLING WORKS

VENTO has a CRUCIAL ABILITY: GENERATING NEW JOBS (&ECONOMIES)

JOBS IN CYCLE-TOURISM IN GERMANY: 177.102 THAT IS 2,2/1000 INHAB.
 FONTE: ECF (2014), CYCLING WORKS

JOBS IN CYCLE-TOURISM IN ITALY: 13.792 THAT IS 0,22/1000 INHAB
 FONTE: ECF (2014), CYCLING WORKS

vento cicloviavento.it POLITECNICO MILANO

63

A LOT&VARIOUS JOBS

vento cicloviavento.it POLITECNICO MILANO

66

Austria: Ciclovía Vienna-Passau
 120 km

I 320 km della Vienna-Passau, una delle dorsali cicloturistiche più frequentate d'Europa con picchi di 5.000 passaggi/giorno nei mesi estivi, produce un indotto di oltre 110 milioni di euro/anno*.

The 320 km of the Vienna-Passau route, one of the Europe's most popular cycling paths with peaks of over 5,000 cyclists per day in the summer months, generates more than 110 million of euro/anno*.

Thanks to bicycles, economy is 'naturally' widespread
 A good arm against inequality

Germania: Ciclovía dell'Elba
 840 km

La famosa autostrada ciclabile tedesca lungo l'Elba conta 155.000 passaggi/anno e genera un indotto di 92 milioni di euro/anno*.

The famed German cycle motorway along the Elbe sees 155,000 passengers per year and generates a total of 92 million euro per year*.

vento cicloviavento.it POLITECNICO MILANO

101

An important condition to achieve: VENTO IS A UNIQUE PROJECT. NO BOUNDARIES. NO FRAGMENTATION. A WHOLE VISION

L'INFRASTRUTTURA DIGITALE VENTO È UNA PIENA CICLO-PERSONALITÀ SINGOLA, BENDATA, CONTINUA, PER UN ECOCULTURISMO DI GRANDI DIMENSIONI (2017).

15% ... 100M€ ... 9.000M€ ... 2.000 ... 186.000

vento cicloviavento.it POLITECNICO MILANO

103

VENTO

Gruppo di ricerca del DASTU:
 Responsabile scientifico, Paolo Pileri
 Alessandro Giacomel, Diana Giudici
 Rossella Moscarelli, Federica Bianchi

www.progetto.vento.polimi.it
 vento@polimi.it

Follow us!
 VENTO Polimi

vento cicloviavento.it POLITECNICO MILANO

106

Pileri P., Giacomel A. e Giudici D. (2015), **VENTO. La rivoluzione a colpi di pedale e paesaggio**, Corraini editore
 Testi in italiano e inglese/Texts in Italian&English

Pileri P., Giacomel A. Giudici D. Moscarelli R., Munno C. e Bianchi F. (2018), **Ciclabili e cammini per narrare territori**, Ediciclo editore
 Testi in italiano e inglese/Texts in Italian&English

Pileri P., (2020), **Progettare la lentezza. Linee antifragili per rigenerare l'Italia a piedi e in bici** People edizioni
 Testi in italiano /Texts in Italian

Pileri P., Moscarelli R. (2020), **Cycling and Walking for Regional Development. How slowness regenerates marginal areas**, Springer
 Testi in Inglese/Texts in English

Articoli, video, recensioni su <https://www.cicloviavento.it/publicazione/>

vento POLITECNICO MILANO

107